

Compression Lug Two Hole - Short Barrel

Features

- Produced from high conductivity copper tubing, and suitable for heavy duty applications
- Tin-plated to provide corrosion resistance
- Color coded

Application

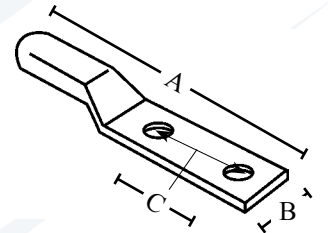
- Listed for 35 KV maximum when properly installed
- Ideal for direct burial in earth or concrete and grounding applications

Standard Material

- Copper

Standard Finish

- Tin plated



Catalog Number	UPC	Wire Size	Color Code	Bolt Size	Unit Carton	Ship Case	Weight/Case	Inches		C = Hole Spacing
								A	B	
2921	81813	8	Red	10	100	1000	18	2.50	.45	.625
2922	81814	6	Blue	1/4"	100	1000	26	2.56	.45	.625
2923	81815	4	Gray	1/4"	100	1000	20	2.34	.50	.625
2925	81816	2	Brown	5/16"	100	1000	18	2.58	.61	.75
2925A	81817	2	Brown	3/8"	100	1000	21	3.05	.61	.75
2926	81818	1/0	Pink	5/16"	100	1000	21	3.14	.75	.875
2927	81819	2/0	Black	3/8"	100	1000	21	3.24	.83	1.75
2927A	81820	2/0	Black	1/2"	100	1000	21	4.17	.83	1.75
2928	81821	3/0	Orange	1/2"	100	1000	28	4.25	.91	1.75
2929	81822	4/0	Purple	1/2"	50	500	19	4.28	1.02	1.75
2929A	81803	250 MCM	Yellow	1/2"	50	500	23	4.41	1.11	1.75
2929B	81804	300 MCM	White	1/2"	50	500	26	4.53	1.24	1.75
2930	81825	350 MCM	Red	1/2"	5	50	26	4.53	1.24	1.75
2931	81826	400 MCM	Blue	1/2"	20	200	26	4.81	1.34	1.75
2932	81807	500 MCM	Brown	1/2"	20	200	26	4.88	1.52	1.75
2933	81808	600 MCM	Green	3/8"	20	200	26	4.49	1.73	1.75
2934	81839	750 MCM	Black	1/2"	20	200	26	4.79	1.89	1.75