

SE Mast Kits

Features

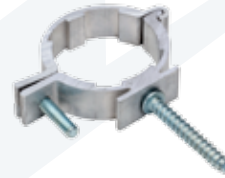
- Accommodates multiple specifications
- Kits eliminate need to purchase and stock additional components

Applications

- Provides an assortment of SE mast components for the installation of overhead service drops



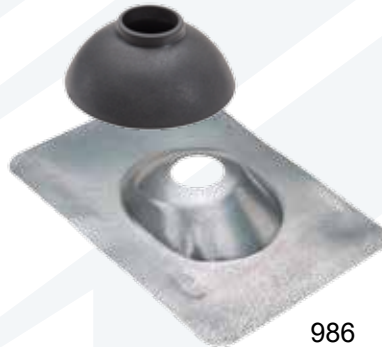
704



1000



1203



986



1008

Catalog Number	UPC	Pipe Size	Head Size	Ship Case	Weight/Case
1514	19717	2"	1-1/4"	1	5
Consists of 704, 986, (2)1000, 1203, 1008					
1517	85114	2"	2"	1	8
Consists of 736, 986, 1008, (2)546					
1515	19718	2-1/2"	2"	1	6
Consists of 706, 999, 987, (2)998					

Kit components can be found in section 5-1 - 5-15