

Two Piece Expansion Couplings

Features

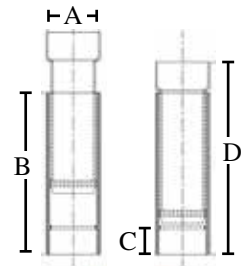
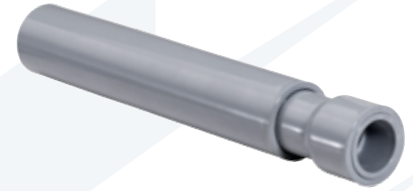
- Meets NEMA TC 3 Requirements
- Seal is watertight

Applications

- For use with Schedule 40 & Schedule 80 PVC conduit
- Compensates for temperature related length changes in exposed applications

Standard Material

- PVC



Catalog Number	UPC	Size	Ship Case	Weight/Case	A	B	C	D
1071	23152	1/2"	25	9	.875	7.0	.6875	8.125
1072	23153	3/4"	10	4	1.0625	7.0	.875	8.125
1073	23154	1"	10	5	1.3125	7.0625	1.0	8.375
1074	23155	1-1/4"	5	4	1.6875	7.625	1.0	9.0
1075	23156	1-1/2"	5	5	1.9375	7.5625	1.125	9.0
1076	23157	2"	25	33	2.375	7.6875	1.1875	9.25
1077	23158	2-1/2"	12	43	2.875	1'	1.875	1' & 2.9375
1078	23159	3"	12	39	3.50	1'	1.875	1' & 2.3125
1079	23373	3-1/2"	9	49	4	1' & .375	2.0	1' & 2.875
1080	23161	4"	6	29	4.50	1' & .3125	2.125	1' & 2.875