



# **BN PRODUCTS-USA, LLC.**

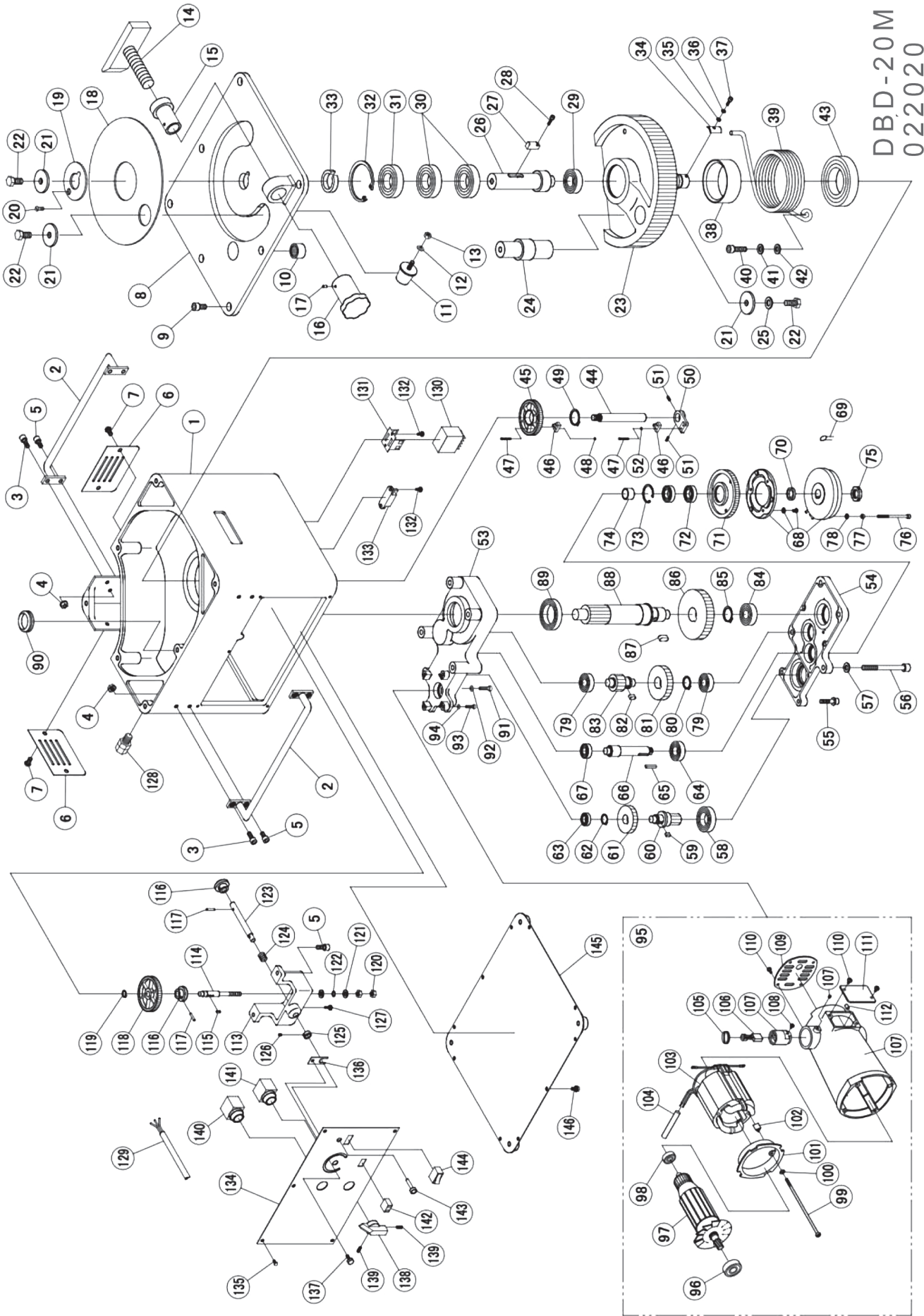
3450 Sabin Brown Road • Wickenburg, Arizona 85390  
(800) 992-3833 • (928) 684-2813 • [www.bnproducts.com](http://www.bnproducts.com)

## Parts List DBD-20M Portable Rebar Bender



**BN Products-USA, LLC.**  
3450 Sabin Brown Road  
Wickenburg, AZ 85390  
(800) 992-3833 • (928) 684-2813  
FAX: (928) 684-7041  
[mail@bnproducts.com](mailto:mail@bnproducts.com)  
[www.bnproducts.com](http://www.bnproducts.com)

*Products that make money, save money and add value to your bottom line*



No.	Part No.	Part Name	Qty
1	1BL51028500	FRAME	1
2	1BL5303401	HANDLE	2
3	7CB08020	CAP BOLT M8X20	4
4	7NS008	NUT W/DISC SPRING 8	4
5	7CB08015	CAP BOLT M8X15	4
6	1BL5402801	BRUSH COVER	2
7	7PB08015	PAN HEAD BOLT M8X15	4
8	1BL51028700	BASE PLATE	1
9	7CB10020	CAP BOLT M10X20	7
10	7TAF243220	NEEDLE BEARING TAF243220	1
11	7KI40	ANTI-VIBRATION RUBBER (KI-40)	1
12	7SW008	SPRING WASHER 8	1
13	7N008	NUT M8	1
14	1BL54265800	ADJUSTABLE STOPPER	1
15	1BR5064	ADJUSTABLE NUT S45C50X74	1
16	1BR5065	ADJUSTABLE HANDLE	1
17	7SP05008W	SPRING PIN M5X8	2
18	1BL54265600	CENTER COVER	1
19	1BL54265700	CENTER PLATE	1
20	7SB06015	CAP BOLT M6X15	1
21	1BL5402000	WASHER	3
22	7B12025T11	BOLT (11T) M12X25	3
23	1BL5101503	SWIVEL GEAR	1
24	1BL54265300	SWIVEL SHAFT	1
25	7SW012	SPRING WASHER 12	1
26	1BL53136600	MAIN SHAFT	1
27	1BL54265200	KEY (4)	1

28	7CB05018	CAP BOLT 5X18	1
29	76205ZZ	BEARING 6205ZZ	1
30	76207ZZ	STOPPER CRESCENT TYPE 5103-18	2
31	762072RS	BEARING 62072RS	1
32	7SRH072	C TYPE STOP RING 72 FOR HOLE	1
33	1BL54265400	SHAFT COLLAR	1
34	1BL5403200	LS DOCK	1
35	7PW005	PLATE WASHER 5	1
36	7SW005	SPRING WASHER 5	1
37	7CB05008	CAP BOLT M5X8	1
38	1BL5402200	SPRING COLLAR	1
39	1BL53136700	RETURN SPRING	1
40	7CB10035	CAP BOLT M10X35	1
41	7SW010	SPRING WASHER 10	1
42	7PW010	PLATE WASHER 10	1
43	762122RS	BEARING 62122RS	1
44	1BL5401700	MAIN SHAFT SUPPORT	1
45	1BL9404400	ANGLE GEAR (B)	1
46	7SS5GL2	LIMIT SWITCH SS5GL2	2
47	7PB2.3015	TAPPING SCREW M2.3X15	4
48	7N002.3	NUT M2.3	2
49	7SRS030	C TYPE STOP RING 30 FOR SHAFT	1
50	1BL5403102	OVERRUN LS STAY	1
51	7SS04008	SET SCREW M4X8	2

52	7SW002.3	SPRING WASHER 2.3	2
53	1BL51028600	GEAR CASE (A)	1
54	1BL5100300	GEAR CASE (B)	1
55	7CW08035	CAP BOLT M8X35	4
56	7CB10110	CAP BOLT M10X110	4
57	7GW010	WASHER 10	4
58	76006ZZ	BEARING 6006ZZ	1
59	7K0606012R2	KEY 6X6X12	1
60	1BL5400502	PINION (1)	1
61	1BL5400402	GEAR (1)	1
62	7SRS020	SNAP RING	1
63	76902ZZ	BEARING 6902ZZ	1
64	76004ZZ	BEARING 6004ZZ	1
65	7K0505028R1	KEY 5X5X28	1
66	1BL5400802	PINION (2)	1
67	76002ZZ	BEARING 6002ZZ	1
68	1BDL401162	CLUTCH TMC 2.5KW	1
69	7TND14V471K	VARISTOR TND14V-471KB00AAAA0	2
70	1BDL400280	COLLAR	1
71	1BDL400242	CLUTCH GEAR	1
72	76904ZZ	BEARING 6904ZZ	2
73	7SRH037	S TYPE STOP RING 37 FOR HOLE	1
74	1BL5400700	CLUTCH COLLAR	1
75	7FU02SC	FINE U NUT	1
76	7CB05080	CAP BOLD M5X80	1
77	7N005	NUT M5	1
78	7SW005	SPRING WASH-ER 5	1
79	76203ZZ	BEARING 6203ZZ	2
80	7SRS025	S TYPE STOP RING 25 FOR HOLE	1

No.	Part No.	Part Name	Qty
81	1BL5400902	GEAR (2)	1
82	7K0807015R2	KET 8X7X15	1
83	1BL5401002	PINION (3)	1
84	76204ZZ	BEARING 6204ZZ	1
85	7SRS030	C TYPE STOP RING 30 FOR SHAFT	1
86	1BL5401202	GEAR (3)	1
87	7K1008023R2	KEY 10X8X23	1
88	1BL53136500	PINION (4)	1
89	76909ZZ	BEARING 6909ZZ	1
90	7V40S	V RING (40S)	1
91	7CB06025	CAP BOLT M6X15	2
92	7GW006	WASHER 6	2
93	7CB05020	CAP BOLT M5X20	2
94	7GW005	WASHER 5	2
95	7UML8	MOTOR ASSEMBLY 95 - 112	1
96	76202ZZ	BEARING 6202ZZ	1
97	7M315320G01	ROTOR (100V)	1
98	76200ZZ	BEARING 6200ZZ	1
99	7PB05100	TAPPING SCREW M5X100	2
100	7SW005	SPRING WASHER 5	2
101	7P304229H01	FAN GUIDE	1
102	7P850966H01	BRACKET	1
103	7M315321G01	STATOR (100V)	1
104	7WT06110	VARNISH TUBE Ø6X110	1
105	7P504595H01	BRUSH CAP	2
106	7P442416G01	BRUSH	2
107	7P445180G01	FLAME SET W/ BRUSH HOLDER	1
108	7P203006BS	TAPPING SCREW M3X6	2
109	7P858310H01	END COVER	1

110	7P205008	TAPPING SCREW M5X8	6
111	7P445701H01	COVER	1
112	7P443817H01	RUBBER PIN	1
113	1BL9303802	ANGLE STAND	1
114	1BL9404200	ANGLE SHAFT (B)	1
115	7K0404010R2	KEY 4X4X10	1
116	1BL9403900	ANGLE PLATE	2
117	7SP04020W	SPRING PIN M4X20	2
118	1BL9404300	ANGLE GEAR (A)	1
119	7SRS012	SNAP RING	1
120	7N008	NUT M8	2
121	7PW008	PLATE WASHER 8	2
122	7WW008	WAVE WASHER 8	1
123	1BL54265900	ANGLE SHAFT (A)	1
124	1BL9405900	ANGLE SPRING	1
125	1BL9404100	ANGLE COLLAR	1
126	7SS04004	SET SCREW 4X4	1
127	7NT304016	TAPPING SCREW M4X16	1
128	7AG1610B	CABLE GRAND (AG16-10B)	1
129	1BDL401180	CORD W/GRIP	1
130	7G7J4AT	RELAY G7J4AT AC100	1
131	7R9904	BRACKET R99-04	1
132	7P304012	TAPPING SCREW M4X12	4
133	7ORM0309FS	CLUTCH POWER	1
134	1BL52070300	CONTROL PANEL	1
135	7TS05010	SCREW M5X10	6
136	1BL5404200	ANGLE PLATE	2
137	7YB05015	BUTTON SCREW M5X15	2
138	1BL9404501	ANGLE SETTER	1
139	7SS05010	SET SCREW M5X10	2

140	7ABS110N	START-UP SWITCH ABS110N	1
141	7ABS201NR	EMERGENCY STOP SWITCH	1
142	7ACT03FB03	OUTLET	1
143	7NB106PWF	PILOT LAMP	1
144	7AJ8101B	MAIN SWITCH	1
145	1BL53136800	BOTTOM PLATE	1
146	7B206012	BOLT M6X12	10
*	1BL52071400AS Not Shown	DBD25M STAND SET	1
*	1BL54035ST Not Shown	ROLLER SET (DBD20M) (20M)	1
*	1BDL401190A Not Shown	FOOT SWITCH OFL-55SM2C W/ PLUG	1

**PORTABLE #6 JOB SITE REBAR BENDER (DBD-20M)**



**Capable of bending No. 5 (3/4") Grade 60 Rebar 180°**

- Bending speed is 0 to 180° in less than 6 seconds and it only pulls 10 Amps.
- This is a electric/mechanical bender with a 6 piece bending roller set and only weighs 147 lbs.
- This tool can lock-in two different bending angles and has an emergency stop feature.



**Product No. DBD-20M**      **Description Portable Rebar Bender**