



BN PRODUCTS-USA, LLC.

3450 Sabin Brown Road • Wickenburg, Arizona 85390
(800) 992-3833 • (928) 684-2813 • www.bnproducts.com



BNT-58X Tiger Tier™ Parts Manual



BNT-58X Parts Manual 2019

Products that make money, save money and add value to your bottom line



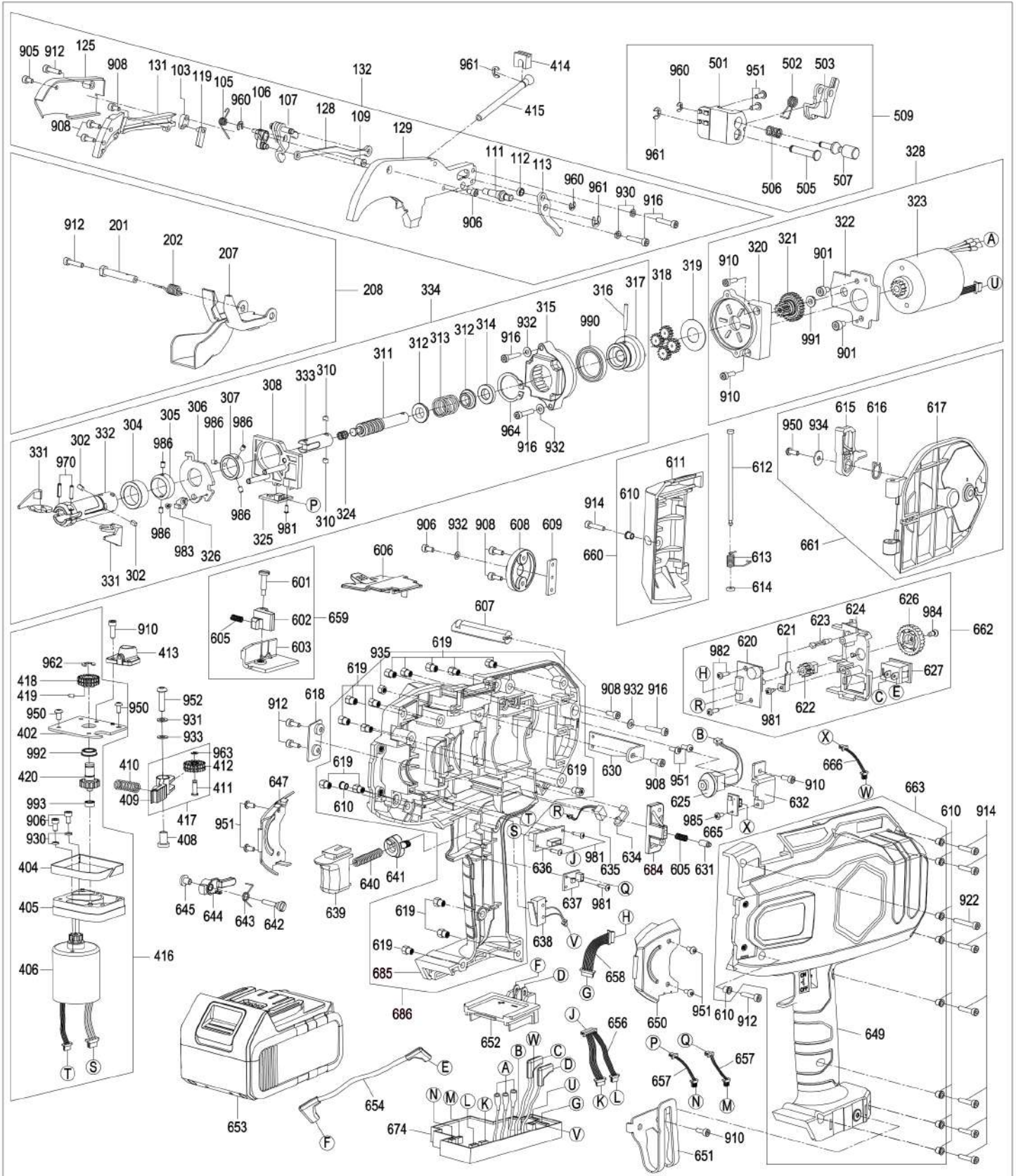
BN Products - USA, LLC

Products for the Construction Industry

3450 Sabin Brown Road • Wickenburg, AZ 85390

BNT-58X TIGER TIER™

6/17/2019



PARTS LIST BNT-58X (6/17/19)			
No.	Part No.	Description	Qty
103	BNT-40-006	Connecting Plate 1	1
105	BNT-40X-105	Torsion Spring 1	1
106	BNT-40X-106	Cutter	1
107	BNT-40X-107	Cutter Lever A	1
109	BNT-40X-108	Cutter Sleeve	1
111	BNT-40X-109	Shaft Screw	1
112	BNT-40X-112	Washer 4	1
113	BNT-40X-113	Cutter Lever C	1
125	BNT-58X-125	Arm A	1
127	BNT-58X-127	Fixed Cutter	1
128	BNT-58X-128	Connecting Rod 1	1
129	BNT-58X-129	Arm A unit	1
131	BNT-58X-131	Wire Guide A	1
132	BNT-58X-132	Arm A Unit Assy	1
201	BNT-40X-201	Stopper Shaft	1
202	BNT-40X-202	Torsion Spring 3	1
207	BNT-58X-207	Curl Guide	1
208	BNT-58X-208	Curl Guide Assy	1
302	ASSY. 334	Key A	2
304	ASSY. 334	Sleeve Guide	1
305	ASSY. 334	Cutting Ring Guide	1
306	ASSY. 334	Cutting Plate	1
307	ASSY. 334	Cutting Ring Washer	1
308	ASSY. 334	Tip Axis Guide Assy	1
310	ASSY. 334	Key B	2
311	ASSY. 334	Tip Axis A	1
312	ASSY. 334	Pin 1	2
313	ASSY. 334	Comp. Spring 2	1
314	ASSY. 334	Bumper	1
315	ASSY. 334	Internal Gear	1
316	ASSY. 334	Pin 5	1
317	ASSY. 334	Planet Gauge Unit	1
318	BNT-40-053	Planet Gear	4
319	BNT-40-054	Gear Press Wheel	1
320	BNT-40X-320	Twisting Motor Gearbox	1
321	BNT-40X-321	Sun Gear Unit	1
322	BNT-40X-322	Motor Fixing plate	1
323	BNT-40X-323	Twisting Motor Unit	1
324	ASSY. 334	Comp. Spring 1	1
325	BNT-40-062	Route PWB Unit	1
326	BNT-40-061	Magnetic Plate	1
328	BNT-40X-328	Twisting Motor Assy	1
331	BNT-58X-331	Hook	2
332	ASSY. 334	Sleeve A	1

No.	Part No.	Description	Qty
333	ASSY. 334	Tip Axis B	1
334	BNT-58X-334	Twister Assy	1
402	BNT-40X-402	Partition Plate	1
404	BNT-40X-404	Dust-Proof strip	1
405	BNT-40X-405	Feeding Motor Gearbox	1
406	BNT-40X-406	Feeding Motor Unit	1
408	BNT-40X-408	Hollow Pin 1	1
409	BNT-40X-409	Release Lever	1
410	BNT-40-103	Comp. Spring 3	1
411	BNT-40-115	Step Pin 1	1
412	BNT-40-114	Feeding Gear B2	1
413	BNT-40X-413	Wire Guide C	1
414	BNT-40X-414	Rubber Base	1
415	BNT-40X-415	Pipe	1
416	BNT-40X-416	Feeding Motor Assy	1
417	BNT-40X-417	Release Lever Assy	1
418	BNT-40X-418	Feeding Gear B1	1
419	BNT-40X-419	Step Pin 4	1
420	BNT-40X-420	Feeding Gear Shaft	1
501	BNT-40-353	Reel Press D	1
502	BNT-40-355	Torsion Spring 7	1
503	BNT-40-356	Reel Press A	1
505	BNT-40-354	Reel Press Centre Axis	1
506	BNT-40-352	Torsion Spring 7	1
507	BNT-40X-507	BN Reel Press limit Axis	1
509	BNT-40X-509	BN Braking Housing Assy	1
601	BNT-40X-601	Step Pin 2	1
602	BNT-40X-602	Release Stopper	1
603	BNT-40X-603	Reel Stopper	1
605	BNT-40-136	Comp. Spring 4	2
606	BNT-40X-606	Window	1
607	BNT-40-123	Joint Reel Magazine	1
608	BNT-40-122	Reel Guide	1
609	BNT-40-143	Fixing Plate 1	1
610	BNT-40-201	Hollow Pin 7	11
611	Assy. 660	Motor Cover	1
612	BNT-40X-612	Step Pin 3	2
613	BNT-40-182	Torsion Spring 5	1
614	BNT-40-183	Rubber Washer	2
615	BNT-40X-615	Reel Stopper	1
616	BNT-40X-616	Torsion Spring 6	1
617	BNT-40X-617	Reel Stay	1
618	BNT-40X-618	Strength Plate	1
619	BNT-40-131	Nut M3	15
620	Assy. 662	Adjusting PWB Unit	1

PARTS LIST BNT-58X (6/17/19)			
No.	Part No.	Description	Qty
621	Assy. 662	Adjusting Spring	1
622	Assy. 662	Joint Knob	1
623	BNT-40-193	LED Unit	1
624	Assy. 662	Adjusting Plate	1
625	BNT-40X-625	BN Braking Motor Assy	1
626	Assy. 662	Adjusting Knob	1
627	BNT-40-190	Main Switch Unit	1
630	BNT-40X-630	Fixing Plate 2	1
631	BNT-40X-631	Jaw Pin	1
632	BNT-40X-632	Brake Motor Platen	1
634	BNT-40X-634	Socket Cap	1
635	BNT-40X-635	Socket	1
636	BNT-40X-636	Feeding PWB unit	1
637	BNT-40-156	Sensor PWB D Unit	1
638	BNT-40-148	Trigger Switch	1
639	BNT-40X-639	Trigger Switch	1
640	BNT-40X-640	Comp. Spring 5	1
641	BNT-40X-641	Trigger Lock	1
642	BNT-40X-642	Bolt	1
643	BNT-40X-643	Torsion Spring 4	1
644	BNT-40X-644	Switch Lever	1
645	BNT-40-161	Pin 4	1
647	BNT-40X-647	Cover L Unit	1
649	Assy. 663	Frame R	1
650	BNT-40X-650	Cover P Unit	1
651	BNT-40X-651	Belt Hook	1
652	BNT-40X-652	Electrode Unit	1
653	BNTLI-20	18V Li-ion Battery	1
654	BNT-40X-654	Battery Connecting Wire	1
656	BNT-40X-656	Feeding Motor Connecting Wire	1
657	BNT-40X-657	Sensor Connecting Wire	2
658	BNT-40X-658	Adjusting Connecting Wire	1
659	BNT-40X-659	Reel Stopper Assy	1
660	BNT-40X-660	Motor Cover Assy	1
661	BNT-40X-661	Reel Stay Assy	1
662	BNT-40X-662	Main Switch Base Assy	1
663	BNT-40X-663	Frame R Assy	1
665	BNT-40X-665	Feeding-Response PWB unit	1
666	BNT-40X-666	BN Cam Connecting Wire	1
671	BNT-58X-671	Main PWB Unit	1
684	BNT-40X-684	Jaw	1
685	Assy. 686	Frame L	1

No.	Part No.	Description	Qty
686	BNT-40X-686	Frame L Assy	1
901	BNT-40X-901	Hex Bolt M4X6	2
904	BNT-40-359	Hex Bolt M3X4	2
905	BNT-40X-905	Hex Bolt M3×5	1
906	BNT-40-002	Hex Bolt M3×6	4
908	BNT-40-071	Hex Bolt M3×8	7
910	BNT-40-021	Hex Bolt M3×10	6
912	BNT-40-001	Hex Bolt M3×12	5
914	BNT-40-173	Hex Bolt M3×14	8
916	BNT-40-172	Hex Bolt M3×16	5
922	BNT-40X-922	Hex Bolt M3×22	1
930	BNT-40-069	Spring Washer φ3	4
931	BNT-40-098	Spring Washer φ4	1
932	BNT-40-105	Washer	4
933	BNT-40-099	Washer 2	1
934	BNT-40-185	Washer 3	1
935	BNT-40-125	Nut M3 (T4)	1
950	BNT-40X-950	Button Head Screw M3X6	3
951	BNT-40-132	Button Head Screw M3X8	8
952	BNT-40X-952	Button Head Screw M4X20	1
960	BNT-40-360	E-ring 3	3
961	BNT-40-012	E-ring 4	3
962	BNT-40X-962	E-ring 5	1
963	BNT-40-073	E-Ring 2	1
964	BNT-40X-964	C-ring 20	1
970	Assy. 327	Spring Pin φ2.5	2
981	Assy. 327	Pan-head Screw ST2.2×6	5
982	BNT-40-063	Pan-head Screw ST3×8	2
983	BNT-40-165	Countersunk screw M2×4	1
984	BNT-40-060	Countersunk Scew M3×10	1
985	BNT-40-191	Pan-head Countersunk screw M2×4	1
986	BNT-40X-986	Hex Screw M3×3	5
990	BNT-40X-990	Bearing 1	1
991	BNT-40X-991	Bearing 2	1
992	BNT-40X-992	Bearing 3	1
993	BNT-40X-993	Bearing 4	1
—	BNTLI-20C	Charger, Battery BNT-40X Not Shown	

