

Grace Drainage Composites

HYDRODUCT® 220

Pre-fabricated geocomposite drain for use as a combined drainage and protection layer with Grace waterproofing membranes

Description

Hydroduct® 220 is a strong, preformed 0.44 in. (11 mm) thick geocomposite drainage sheet system, comprising a hollow studded polystyrene core, covered on one side with a nonwoven, needle punched polypropylene filter fabric and on the other side with a smooth polymeric film.

Advantages

- **Enhances waterproofing**—eliminates hydrostatic pressure build-up
- **Efficient water collector/deflector**—can be used as a sandwich drainage layer between lagging and the reinforced concrete structure
- **Smooth polymeric sheet**—compatible with Preprufe®, Procor®, or Bituthene® membranes
- **Simple convenient drainage and protection layer**—serves as robust membrane protection and drainage
- **Geotextile fabric filter**—allows ground water to pass into the drain core while restricting the movement of soil particles
- **High flow capacity**—drains 17 gals/min./ft (211 L/min./m) width
- **Rot proof**—unaffected by permanent immersion in water, bacteria, dilute acids and alkalis
- **Economical**—eliminates imported aggregate drainage layers
- **Studded core**—allows water to flow to designated drainage collection points

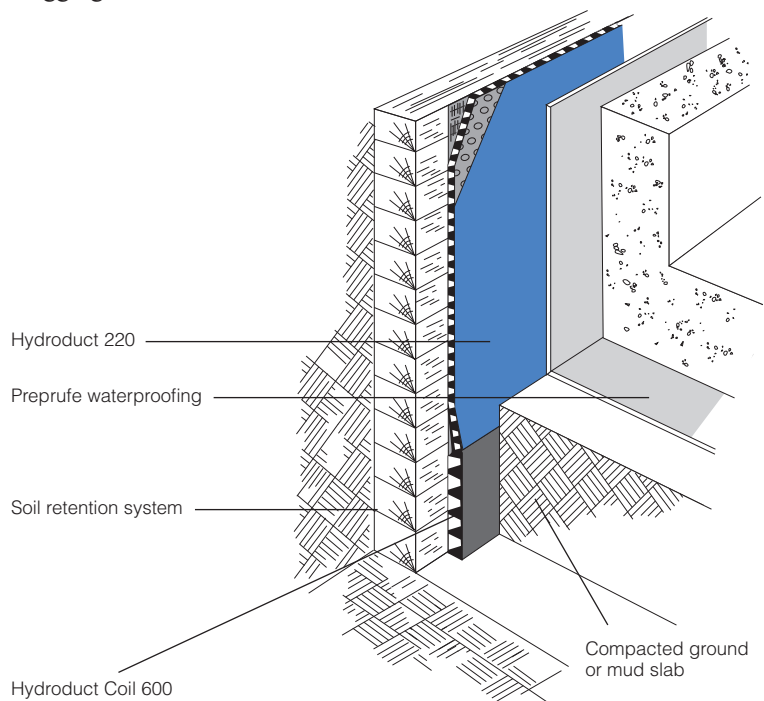
Use

Hydroduct 220 is designed primarily for use with waterproofing materials in vertical installations. Hydroduct 220 has been specially developed to provide a simple and highly practical collector and deflector of unwanted ground water on foundation walls, retaining walls, tunnels and planters. It can be used with Preprufe®, Procor®, or Bituthene® waterproof membranes. When installed it protects the membrane from damage and minimizes the build-up of percolated surface water against the structure. The construction of the studded sheet also creates an air void to isolate the structure from the effects of the surrounding ground.

Hydroduct 220 has been designed to withstand ground pressures and the compaction forces of wet concrete to maintain a high water flow capacity. The drainage sheet must be connected into the site drainage system to minimize hydrostatic build-up and collect infiltrated water using Hydroduct Coil 600 or traditional perforated pipes wrapped and linked with the geotextile filter fabric to prevent clogging.

Product Advantages

- Enhances waterproofing
- Efficient water collector/deflector
- Smooth polymeric sheet
- Simple convenient drainage and protection layer
- Geotextile fabric filter
- High flow capacity
- Rot proof
- Economical



Drawings are for illustration purposes only.
Please refer to graceconstruction.com for specific application details.

Supply

Hydroduct 220		
Roll size	4 ft x 50 ft (1.2 m x 15.2 m) 200 ft ² (18.6 m ²)	
Packaging	6 rolls/pallet	
Weight	38 lbs (17.2 kg)/roll	
Complementary Materials		
Preprufe Detail Tape	2 in. x 50 ft (50 mm x 15 m) roll/16 rolls per carton	
Hydroduct Coil 600	50 ft (15.2 m) roll	

Physical Properties

Property	Typical Value	Test Method
Drainage Core		
Polymer	High impact polystyrene	
Thickness	0.44 in. (11 mm) nominal	ASTM C366 method B
Compressive strength	15,000 lbs/ft ² (718 kPa)	ASTM D1621 (modified)
Flow rate (gradient 1.0, load 172 kPa)	17 gal/min./ft (211 L/min./m)	ASTM D4716
Geotextile		
Type	Nonwoven	
Polymer	Polypropylene	
Weight	4.0 oz/yd ² (136 g/m ²)	ASTM D3776
Tensile strength	100 lbs (445 N)	ASTM D4632
Apparent opening size	70 U.S. sieve (0.21 mm)	ASTM D4751
Flow rate	165 gal/min./ft ² (6724 L/min./m ²)	ASTM D4491
CBR puncture	275 lbs (1.22 kN)	ASTM D6241

Application Procedures

Safety, Storage and Handling Information

All construction products must be handled properly. Material Safety Data Sheets (MSDS) are available at graceconstruction.com and users should acquaint themselves with this information. Carefully read detailed precaution statements on product labels and the MSDS before use.

Installation

Position Hydroduct so that the geotextile fabric filter is facing toward the groundwater, soil or overburden. The solid polymeric film provides extra protection for waterproofing such as Procor or Bituthene and should not be removed.

In vertical applications, Hydroduct 220 Drainage Composites can be applied to the substrate vertically but should extend from the perimeter discharge pipe to a point approximately 6 in. (150 mm) below the anticipated grade line.

When adhering Hydroduct 220 directly to Bituthene waterproofing membranes, Preprufe Detail Tape should be used. When using Preprufe Detail Tape, press firmly to ensure good adhesion. Substrate and job site conditions will determine

the attachment pattern. Additional consideration should be given in high wind exposures. Abut adjacent rolls with excess fabric overlapping in shingle fashion.

For inside and outside corners, abut adjoining drainage composite at the corner. Cover open core with extra geotextile filter fabric.

The exposed core along the top terminations should be covered with a strip of geotextile to prevent intrusion of soil into core. At the bottom termination extend the Hydroduct 220 Drainage Composite out from the structure so that it passes behind and under the perimeter discharge pipe. Additional geotextile should be wrapped over the pipe to prevent soil intrusion.

To secure Hydroduct 220 around protrusions, apply Preprufe Detail Tape around the protrusion in a picture frame configuration. Cut Hydroduct 220 to fit snugly around the protrusion. Press the cut edge firmly into Preprufe Detail Tape.

Hydroduct 220 should be covered promptly. Do not leave Hydroduct 220 exposed to sunlight for more than two weeks. Motor vehicles, construction equipment or other trades should not be allowed directly on the Hydroduct 220.

www.graceconstruction.com

For technical assistance call toll free at 866-333-3SBM (3726)

Hydroduct, Bituthene and Preprufe are registered trademarks of W. R. Grace & Co.—Conn. Procor is a U.S. registered trademark of W. R. Grace & Co.—Conn., and is used in Canada under license from PROCOR LIMITED.

We hope the information here will be helpful. It is based on data and knowledge considered to be true and accurate and is offered for the users' consideration, investigation and verification, but we do not warrant the results to be obtained. Please read all statements, recommendations or suggestions in conjunction with our conditions of sale, which apply to all goods supplied by us. No statement, recommendation or suggestion is intended for any use which would infringe any patent or copyright. W. R. Grace & Co.—Conn., 62 Whittemore Avenue, Cambridge, MA 02140. In Canada, Grace Canada, Inc., 294 Clements Road, West, Ajax, Ontario, Canada L1S 3C6.

This product may be covered by patents or patents pending.
HYD-040H Printed in U.S.A. 10/13

Copyright 2013. W. R. Grace & Co.—Conn.
FA/PDF

GRACE